

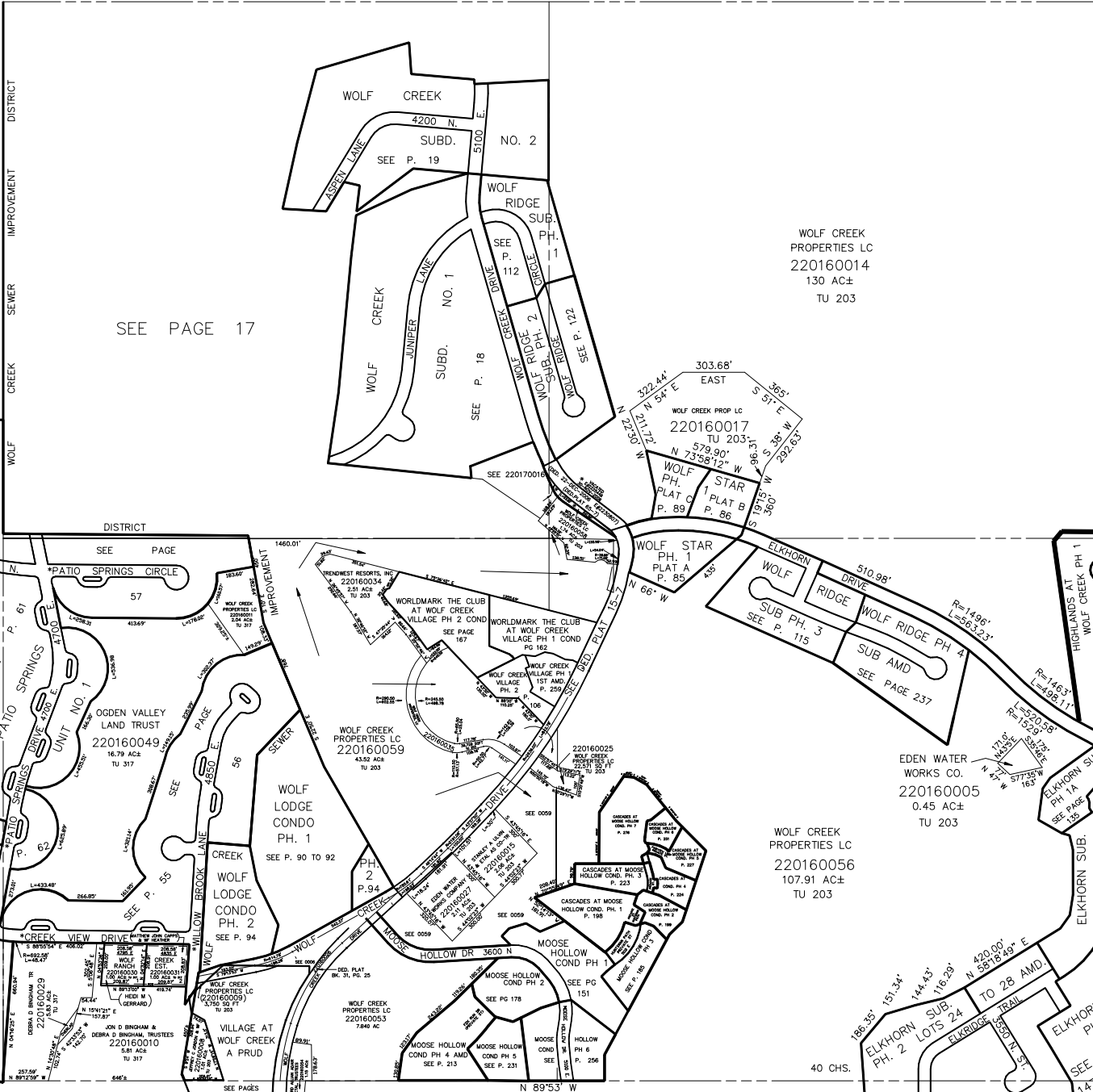
# SECTION 22, T.7N., R.1E., S.L.B. & M.

IN WEBER COUNTY

SCALE 1" = 400'

TAXING UNIT: 203, 317

SEE PAGE 6



SEE PAGE 15

SEE PAGE 17

SEE P. 58

SEE P. 59

SEE P. 15

SEE P. 61

SEE P. 218

SEE P. 218

SEE P. 218

SEE P. 218

SEE P. 218

SEE P. 218

SEE P. 218

SEE P. 218

SEE P. 218

SEE P. 218

SEE P. 218

SEE P. 218

SEE P. 218

SEE P. 218

SEE P. 218

SEE PAGE 20

SEE PAGE 130

SEE PAGES 147 & 148

\* STREET NAME CHANGE  
 19-JAN-95 17444-1014  
 E #1329313

SEE PAGE 21